



GMT MONTHLY MEMBERSHIP PROGRESS REPORT

Results as of: 8/31/2019

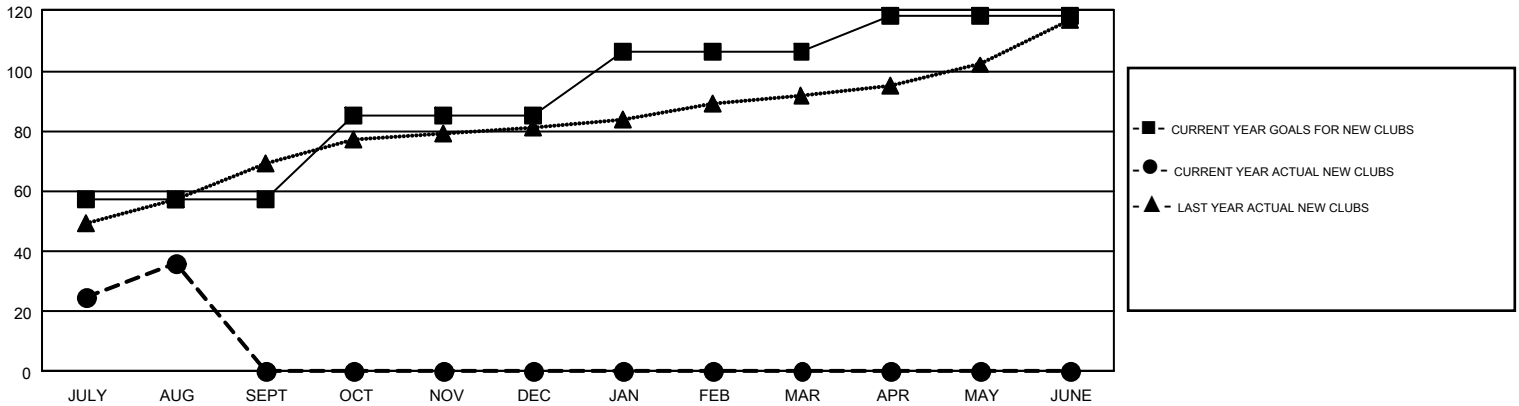
GMT Constitutional Area 6, Group K

GMT: OPEN

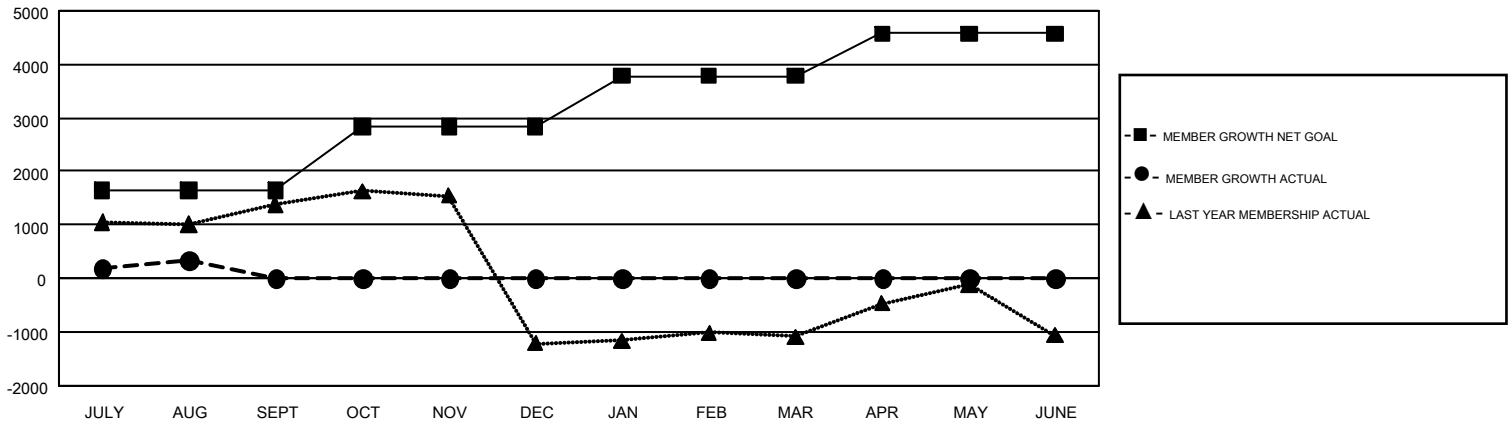
REPORT DOES NOT INCLUDE CLUBS IN UNDISTRICTED AREAS.

Clubs				Members			
RESULTS FOR 2019-2020				RESULTS FOR 2019-2020			
QUARTER	NEW CLUB GOAL	NEW CLUBS	DROPPED CLUBS	QUARTER	MEMBER GROWTH NET GOAL	MEMBER GROWTH ACTUAL	DROPPED MEMBERS ACTUAL (including transfers)
JULY/AUG/SEPT	57	36	12	JULY/AUG/SEPT	1650	1,404	992
OCT/NOV/DEC	28	0	0	OCT/NOV/DEC	1180	0	0
JAN/FEB/MAR	21	0	0	JAN/FEB/MAR	950	0	0
APR/MAY/JUNE	12	0	0	APR/MAY/JUNE	795	0	0

GOALS AND ACTUAL NEW CLUBS CUMULATIVE



GOALS AND ACTUAL MEMBERS CUMULATIVE



DROPPED CLUBS: 12	207 CLUBS OF 1,041 ADDED 1 OR MORE NEW MEMBERS	GENDER DISTRIBUTION MALE 26,758 (68.77%) FEMALE 12,152 (31.23%)
DROPPED MEMBERS DECEASED 7 CLUB CANCELLED 146 OTHER 837 <hr/> TOTAL 990	CLICK HERE FOR CUMULATIVE MEMBERSHIP DATA	TOTAL FAMILY UNIT MEMBERS 17,871 FAMILY MEMBERS PAYING HALF DUES 10,251